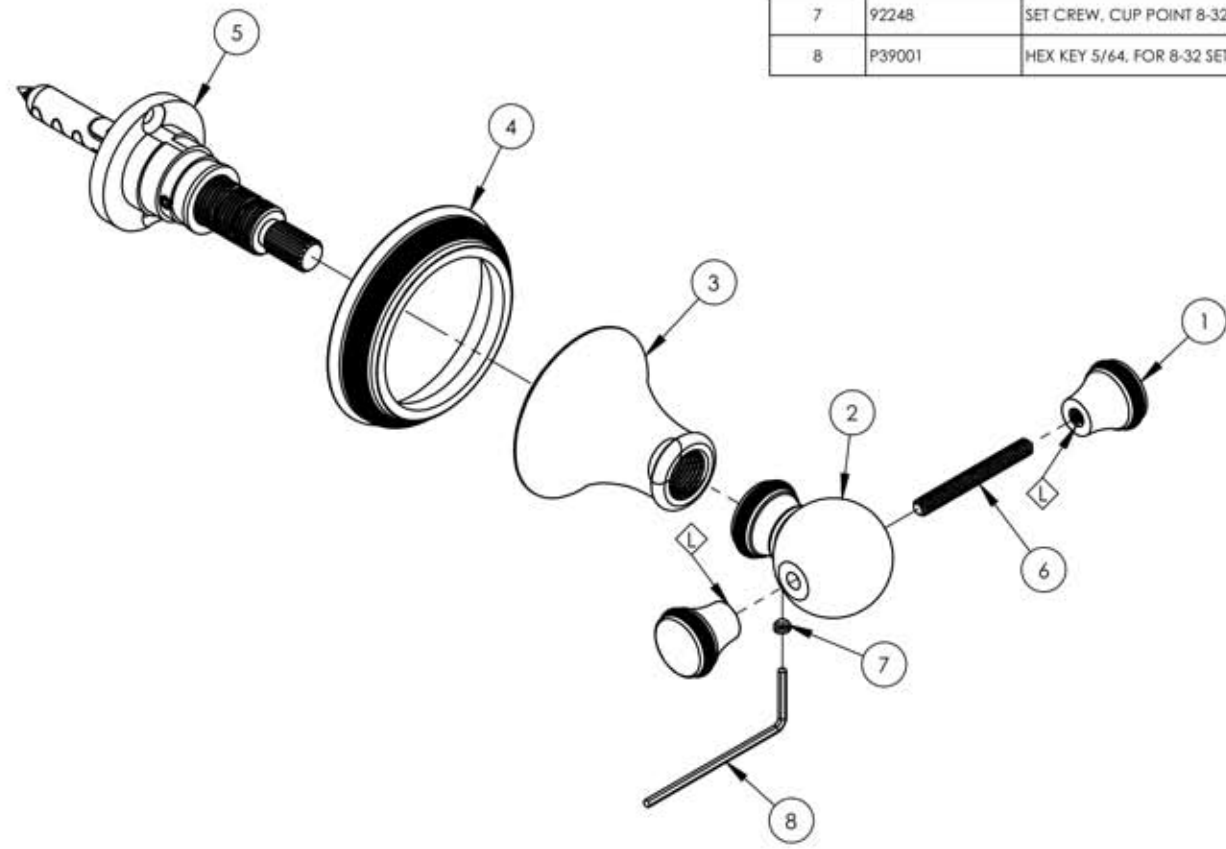


NOTE(S):
 1. ALL DIMENSIONS SHOWN ARE FOR REFERENCE ONLY

2. APPLY NSF COMPLAINT GREASE TO ANY O-RING AND/OR SEALING JOINTS. G

3. APPLY NSF COMPLAINT LOCTITE TO THREADED AREA. L

ITEM NO.	PART NUMBER	DESCRIPTION	QTY.
1	10525/00	ROBE HOOK FINIAL, 208 SERIES	2
2	10526/00	DOUBLE ROBE HOOK POST, 208 SERIES	1
3	10972/00	HUB, TRANSITIONAL 3RING	1
4	10978/00	ESCUTCHEON HANDLE BASE COINED, 3RING, COINED SERIES	1
5	2-104	MOUNTING KIT WITH BROACH	1
6	92230	THREADED ROD 10-24, 1-5/8" L	1
7	92248	SET CREW, CUP POINT 8-32 UNC, 1/8" L.	1
8	P39001	HEX KEY 5/64, FOR 8-32 SET SCREW	1



ZONE	REV.	DESCRIPTION	DATE	APPROVED
REVISIONS				
1261 LOGAN AVENUE COSTA MESA, CALIFORNIA 92626		PHYLORICH®	PROPRIETARY AND CONFIDENTIAL	
PHONE: 714.361.4800 FAX: 714.617.3120			THE INFORMATION CONTAINED IN THIS DRAWING IS THE SOLE PROPERTY OF R3S MANUFACTURING. ANY REPRODUCTION IN PART OR AS A WHOLE WITHOUT THE WRITTEN PERMISSION OF R3S MANUFACTURING IS PROHIBITED.	
Defining Luxury Since 1959				

-		INTERPRET GEOMETRIC DIMENSIONING & TOLERANCING IN ACCORDANCE WITH ASME Y14.5-2009 & ASME Y14.41-2003 STANDARDS. UNLESS OTHERWISE SPECIFIED, DIMENSIONS ARE IN INCHES. TOLERANCES ARE:		
NEXT ASSY	USED ON	FRACTIONS ±1/64"	DECIMALS X.X: ±.1 X.XX: ±.01 X.XXX: ±.005	ANGULAR ±.5°
APPLICATION		MATERIAL	NAME	DATE
FINISH		DRAWN	LLO	9/24/2015
DO NOT SCALE DRAWING		CHECKED	GRE	

DOUBLE ROBE HOOK, COINED SERIES			
SIZE	ASM/PRT NO.	REV	
A	208-77/00	-	
SCALE: 1:2	WEIGHT: lbs.	SHEET 1 OF 2	

5

4

3

2

1